

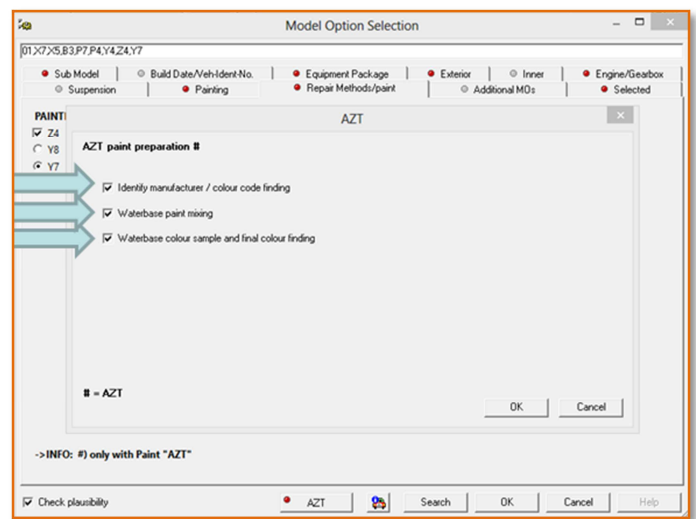
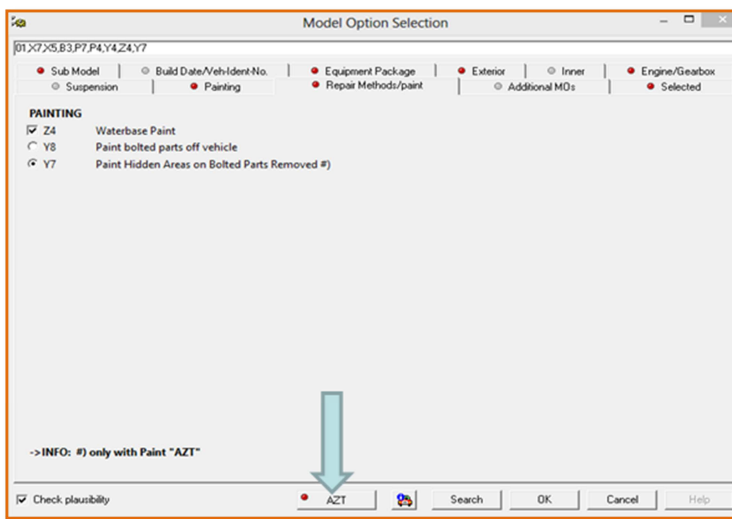


News Flash

AZT WATERBASE PAINT PREPARATION

How to select AZT waterbase paint preparation in Abuntex.

1. Within the model option selection in the repair methods/paint section, select Waterbase Paint.
2. Select the AZT Function at the bottom of the screen.
3. Select the three boxes to ensure activation:
 - Identify manufacturer / colour code finding.
 - Waterbase paint mixing.
 - Waterbase colour sample and final colour finding.



In the Full Report under the Labour Cost – Paint section you will find the following descriptions:

1. Preparation Colour Mixing – 3WU
2. Preparation Colour Sample – 3WU
3. Preparation Manufacturer Search – 1WU

LABOUR COST - PAINT		
FACTOR	R180.00 Price/HR	
TIME(PAINT)		100.0
Preparation Colour Mixing		3.0
Preparation Colour Sample		3.0
Preparation Manufacturer Search		1.0

